



SUMMER '18  
COURSE CATALOG



**COMMUNITY EDUCATION**

VOL. 1 ISSUE 1



# A MESSAGE FROM THE DIRECTOR OF ACTIVITIES & COMMUNITY EDUCATION



Dear Community Members,

I am proud to present the first issue of the Saydel Community School District Community Education Course Catalog.

It is the mission of Saydel Community Education to enhance the lives of all residents in the Saydel Community School District through improving access to educational and recreational activities for an active lifestyle.

My goal in creating this catalog is to offer opportunities for district and non-district residents, that promote lifelong learning, keep community members involved as active contributors to society, help participants make new friends and relationships, develop music and athletic abilities, create opportunities within the Saydel District facilities and build course offerings at a reasonable price. The catalog offers youth and adult enrichment opportunities as well as youth and adult athletic programs and camps.

As always, please feel free to contact me. I welcome your feedback on how we can continue to grow Saydel Community Education and better serve our students, families, and community members.

Melissa Crosse  
Director of Activities & Community Education  
515-262-9325





# Register Now!

Online Registration at  
<https://saydel.revtrak.net/>

Onsite Registration at  
Saydel High School  
5601 NE 7th Street  
Des Moines, IA 50313  
515-262-9325

Registration is required for all classes.

Registration is open to district and non-district residents.

Registration deadlines are online at [saydel.revtrak.net](https://saydel.revtrak.net)

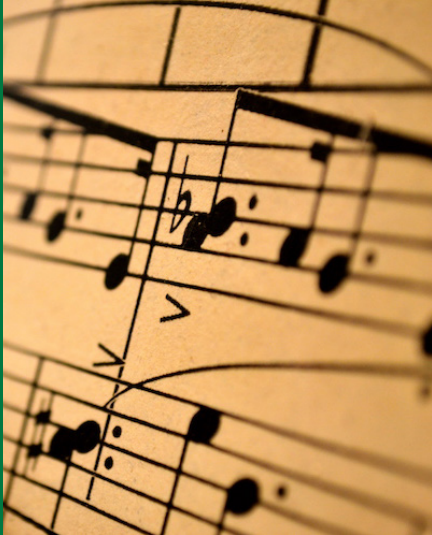
## Interested in teaching?

Email  
[communityed@saydel.net](mailto:communityed@saydel.net)

Have an event you would  
like published in the 2018  
Fall Community Ed Course  
Catalog?

Email  
[communityed@saydel.net](mailto:communityed@saydel.net)





## Drama Camp

Students grades 3-8 can participate in Drama Camp. Instructed by Colleen Babcock, the camp will focus on drama skills, stage presence and performance confidence. Fee of \$50 per student includes a snack each day. Camp will conclude with a free mini-performance, open to spectators, Friday, July 27 at Noon, SHS Auditorium.

Type	Date	Time	Location	Cost
Grades 3-8	7/23 - 7/27	9:00am-12:00pm	SHS Auditorium	\$50

## Band Lessons

Grade/Type	Day	Time	Location	Cost
5 <sup>th</sup> Woodwind	M,W,F	9:00-9:30am	Woodside	\$30
5 <sup>th</sup> Brass/Percussion	T,TH,F	9:00-9:30am	Woodside	\$30
6 <sup>th</sup> Woodwind	M,W,F	9:40-10:10am	Woodside	\$30
6 <sup>th</sup> Brass	T,TH,F	9:40-10:10am	Woodside	\$30
7 <sup>th</sup> Woodwind	M,W,F	10:20-10:50am	Woodside	\$30
7 <sup>th</sup> Brass	T,TH,F	10:20-10:50am	Woodside	\$30
8 <sup>th</sup> Woodwind	M,W,F	11:00-11:30am	Woodside	\$30
8 <sup>th</sup> Brass	T,TH,F	11:00-11:30am	Woodside	\$30
6 <sup>th</sup> Percussion	M,W,F	11:40am-12:10pm	Woodside	\$30
7/8 Percussion	T,TH,F	11:40am-12:10pm	Woodside	\$30

\*All Lessons are located at Woodside MS Band Room, instructed by Jerry Young.

\*Lessons will be held June 4 - June 29. Fee includes 12 total sessions.

\*Participants should register for the grade they will be attending in Fall of 2018.

## Youth Basketball Camp

Students grades 3-8, can register for the three day Youth Basketball Camp. Instructed by the Saydel Basketball Coaching Staff, the camp will focus on fundamentals, teamwork and sportsmanship. Fee of \$30 per student includes a snack and a t-shirt.

Type	Date	Time	Location	Cost
Youth Boys	7/17-7/19	6:00-8:00pm	SHS South Gym	\$30
Youth Girls	7/17-7/19	6:00-8:00pm	SHS South Gym	\$30

### Cancellations

Saydel Community Education reserves the right to cancel classes. Class will be cancelled if there is insufficient enrollment.

### Age Requirements

When registering students, please select the grade they will be in Fall of 2018.

### Registration

Registration is open to district and non-district residents. Online registration available at [Saydel.revtrak.net](http://Saydel.revtrak.net)



# Speed & Agility

Hosted by Maka Stewart from Select Physio Therapy, students grades 7-12 can register for Speed & Agility. The program is designed for students, at any skill level, looking to improve their current athletic performance. Exercises are designed to improve overall quickness, strength, speed, and agility, with a focus on footwork, legs and core strength. Fee of \$80 includes 8 weeks, 16 sessions. Minimum of 20 participants required to avoid cancellation. No class July 2 & 4.

Days	Date	Time	Location	Cost
M,W	6/4-8/1	11:00am-12:00pm	SHS North Gym	\$80

# Volleyball Camp

Hosted by the Saydel Volleyball Program, students in grades 5-8 can register for the summer volleyball camp. Registration fee includes a camp t-shirt.

- \*Grades 5-6 \$30 - 3 day camp.
- \*Grades 7-8 \$40 - 4 day camp.

Type	Date	Time	Location	Cost
Grades 5-6	7/17-7/19	12:00-2:00pm	SHS South Gym	\$30
Grades 7-8	7/16-7/19	3:00-5:00pm	SHS South Gym	\$40

# Football Camp

Students can register for Football Camp. Instructed by the Saydel Football Coaching Staff, the camp will focus on fundamentals, teamwork and sportsmanship.

The High School Camp, grades 9-12, is located at Camp Dodge. Fee of \$20 includes a t-shirt, meals and additional activities.  
 The Youth Camp, grades 3-8, is located at the SHS Stadium. Fee of \$30 includes a t-shirt.  
 The Middle School Camp, grades 7-8, is located at the SHS Stadium.

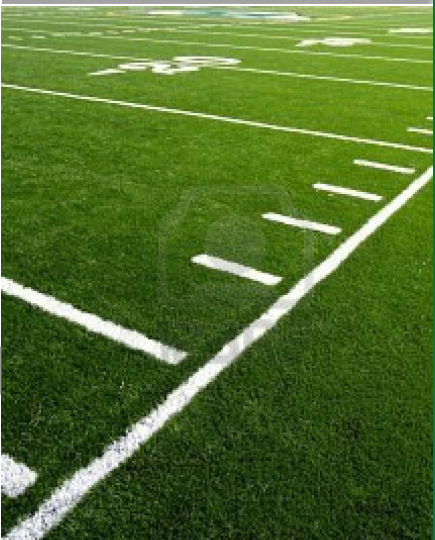
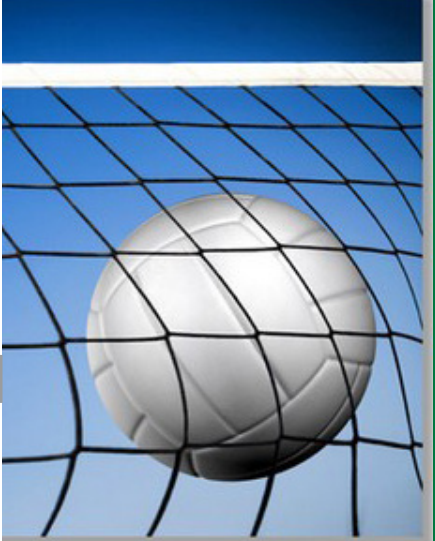
Type	Date	Time	Location	Cost
HS Camp	7/17,7/18,7/19	Overnight	Camp Dodge	\$20
Youth Camp	8/1,8/2,8/3	5:30-6:30pm	SHS Stadium	\$30
MS Camp	8/20,8/21,8/22	5:30-7:00pm	SHS Stadium	FREE

# Youth Football League

Youth Flag Football Hosted by Saydel - Grades 1- 2 - \$55

Youth Tackle Football Hosted by YSF Grades 3-4 and 5-6 - \$100  
 Registration only at <http://youthsportsfoundation.org/saydel-youth-football/>  
 --Uniform fitting information will be emailed to registered participants.

Type	Date	Time	Location	Cost
Youth Flag	9/9-10/7	10-11:45am	SHS Stadium	\$55
Youth Tackle	TBA	TBA	SHS Stadium	\$100

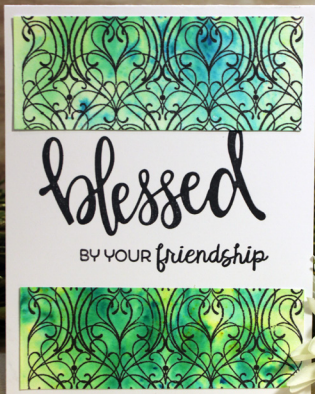




## Finance Education Classes

Hosted by Cory J. Dawkins, each class offers in-depth knowledge about financial education topics, such as social security and financial planning. Class fee of \$5 includes time after class for questions/answers.

Days	Date	Time	Location	Cost
T	6/5	6:30-8:00pm	SHS Room # 207	\$5
T	6/12	6:30-8:00pm	SHS Room # 207	\$5
T	6/19	6:30-8:00pm	SHS Room # 207	\$5
T	6/26	6:30-8:00pm	SHS Room # 207	\$5



## Paper Crafting With Lisa

Hosted by Lisa Christensen, at MayDreamRose.com, participants will make four beautiful cards per workshop, using watercolor, background stamping and gold embossing techniques.

Days	Date	Time	Location	Cost
TH	6/7	6:30-8:00pm	SHS Room # 203	\$15
TH	7/5	6:30-8:00pm	SHS Room # 203	\$15
TH	8/2	6:30-8:00pm	SHS Room # 203	\$15



## One-Dish Meal Cooking Class

Hosted by Dana Accola, the Saydel HS Culinary Arts Teacher, adults 16 years of age and older can register for the One-Dish Meal Cooking Class. Participants will make two casserole dishes to take home at the conclusion of class, ingredients and cooking supplies included. A minimum of 10 registered participants required.

Days	Date	Time	Location	Cost
Day	8/6- 8/7	6:00-8:00pm	SHS Room #406	\$20

### Cancellations

Saydel Community Education reserves the right to cancel classes. Class will be cancelled if there is insufficient enrollment.

### Age Requirements

When registering students, please select the grade they will be in Fall of 2018.

### Registration

Registration is open to district and non-district residents. Online registration available at [Saydel.revtrak.net](http://Saydel.revtrak.net)



## Adult CO-ED Volleyball League

Hosted by the Saydel Volleyball Program, the league will include 8 weeks of play, including playoffs and championship medals for the winning team. 6 player minimum, 8 player maximum and at least 2 female players. 6 team registration minimum.

Days	Date	Time	Location	Cost
T	6/5, 6/12 6/19, 6/26 7/10, 7/17 7/24, 7/31	6pm, 7pm, 8pm	SHS North Gym	\$150

## Adult Zumba

Hosted by fitness instructors Ashlie Van Horn & Denise Lundberg, this class offers various levels of cardiovascular endurance for adults in any condition. Fee of \$50 includes 8 weeks, 16 sessions. No classes July 2, 3, 4, 5, 6

Days	Date	Time	Location	Cost
T & TH	6/5-8/2	5:15-6:15pm	SHS Auditorium	\$50
T & TH	8/7-9/27	5:15-6:15pm	SHS Auditorium	\$50

## Open Gym & Cardio Facilities

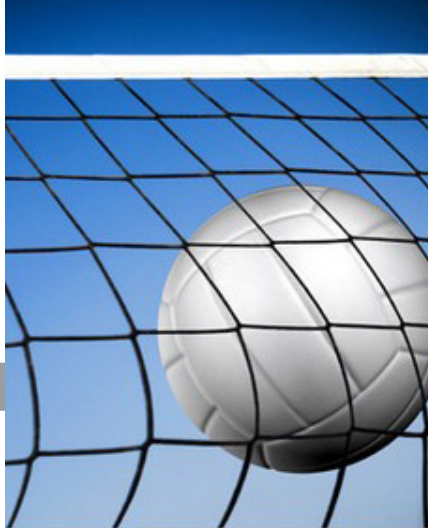
Adults 16 years of age and older can register for open gym and cardio facilities. All participants are required to register online. Due to safety, participants must wear closed-toe gym shoes and a t-shirt.

Days	Date	Time	Location	Cost
M	6/4	5:00-8:00pm	SHS North Gym	FREE
M	6/18	5:00-8:00pm	SHS North Gym	FREE
M	7/2	5:00-8:00pm	SHS North Gym	FREE
M	7/16	5:00-8:00pm	SHS North Gym	FREE

## Woodside AM Workout

Hosted by Aaron Vance, adults 18 years of age and older can register for the Woodside AM Workout, offered Monday - Friday at 4:00am in the Woodside Gym. Due to safety, participants must wear closed-toe gym shoes and a t-shirt.

Days	Date	Time	Location	Cost
M,T,W,TH,F	5/1-6/29	4:00-5:00am	Woodside Gym	\$25
M,T,W,TH,F	7/2-8/31	4:00-5:00am	Woodside Gym	\$25



SAYDEL COMMUNITY SCHOOL DISTRICT  
5740 NE 14TH STREET  
DES MOINES IOWA 50313

NONPROFIT ORGANIZATION  
US POSTAGE PAID  
DES MOINES, IOWA  
PERMIT NO. 57

ECR WSS EDDM  
POSTAL CUSTOMER

## SAYDEL SCHOOLS:

### Cornell Elementary School

Grades PK - 4  
5817 NE 3rd Street, Des Moines, IA 50313  
515-244-8173  
Mr. Brian Vaughan, Principal



### Woodside Middle School

Grades 5-8  
5810 NE 14th Street, Des Moines, IA 50313  
515-265-3451  
Mr. Joshua Heyer, Principal

### Saydel High School

Grades 9-12  
5601 NE 7th Street, Des Moines, IA 50313  
515-262-9325  
Mr. Kevin Schulte, Principal  
Mr. Alex Stubbers, Vice Principal  
Melissa Crosse, Director of Activities/Community Education

### Saydel District Office (Adjacent to Woodside Middle School)

5740 NE 14th Street, Des Moines, IA 50313  
515-264-0866; [www.saydel.k12.ia.us](http://www.saydel.k12.ia.us)

**Dr. Douglas Wheeler**, Superintendent of Schools

**Ryan Eidahl**, Business Manager

**Mary Salazar**, Director of Curriculum, Instruction, Assessment

**Julie McKibben**, Director of Student Services, Special Education

**Jessy Sadler**, Director of Food Services

## Board of Education

**Brian Bowman**, Board President  
**Jennifer Van Houten**, Vice-President  
**Julie Jennings**, Board of Director  
**Doug Kayser**, Board of Director  
**Roland Kouski, Jr.**, Board of Director  
**Rob Strickler**, Board of Director  
**Chad Vitiritto**, Board of Director

## Community Education Committee

**Melissa Crosse**, Director of Community Education

Haley Ellis  
Roxie Franklin  
Shannon Harden  
Theodore Herron  
Joshua Heyer  
Julie Jennings  
Roland Kouski, Jr.  
Jessica Light  
Jeremy Lowe

Ginny Mitchell  
Shannon Riddlebarger  
Beth Shelton  
Valerie Skow  
Melissa Smith  
Cassie Strickler  
Jennifer Van Houten  
Henry Wood  
Tricia Zeis

It is the policy of the Saydel Community School District not to illegally discriminate on the basis of race, color, national origin, sex, disability, religion, creed, age (for employment), marital status (for programs), sexual orientation, gender identity and socioeconomic status (for programs) in its educational programs and its employment practices. There is a grievance procedure for processing complaints of discrimination. If you have questions or a grievance related to this policy, please contact the district's **Equity Coordinator, Julie McKibben, Director of Student Services, 5740 NE 14th Street, Des Moines, IA 50313; [mckibbenjulie@saydel.net](mailto:mckibbenjulie@saydel.net); 515-260-0866.** Office for Civil Rights, Citigroup Center, 500 W. Madison Street, Suite 1475, Chicago, IL 60661.